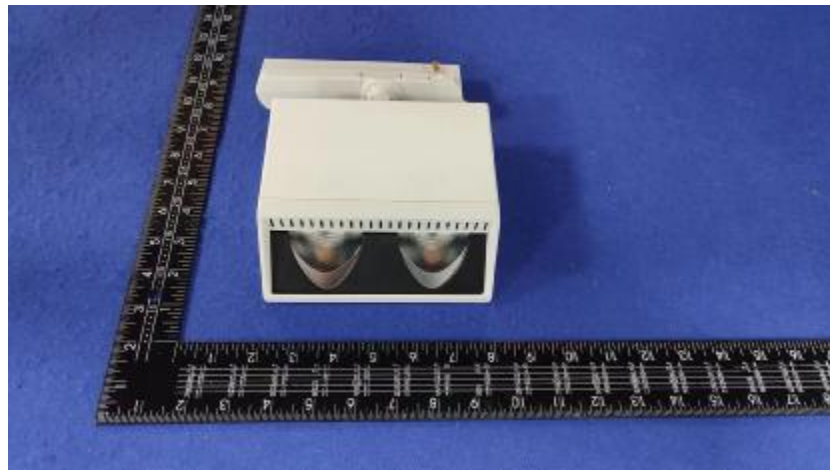


Luminaire Photograph



Light Output Ratio:	89.1%	
Luminaire Power:	42.65 W	
SHR Nominal:	0.50	Calculated using the TM5
SHR Maximum:	0.55	fine grid method.

C Range: 0 - 360DEG
C Interval: 30.0DEG
Test Speed: HIGH
Temperature: 25.3DEG
Operators: Zoe
Test Date: 2023-1-11

g Range: 0 - 180DEG
g Interval: 1.0DEG
Test System: EVERFINE GO-SPEX500_V1 SYSTEM V2.00.416
Humidity: 65.0%
Test Distance: 3.160m [K=1.0000]
Remarks: LAMP: CLU028-1204C4-303H5M3-F1 Ra: 90
REFLECTOR: AP-060C-WW
DRIVER: PRO-UA440 1050mA
30minutes warm-up

LUMINOUS INTENSITY DISTRIBUTION DIAGRAM

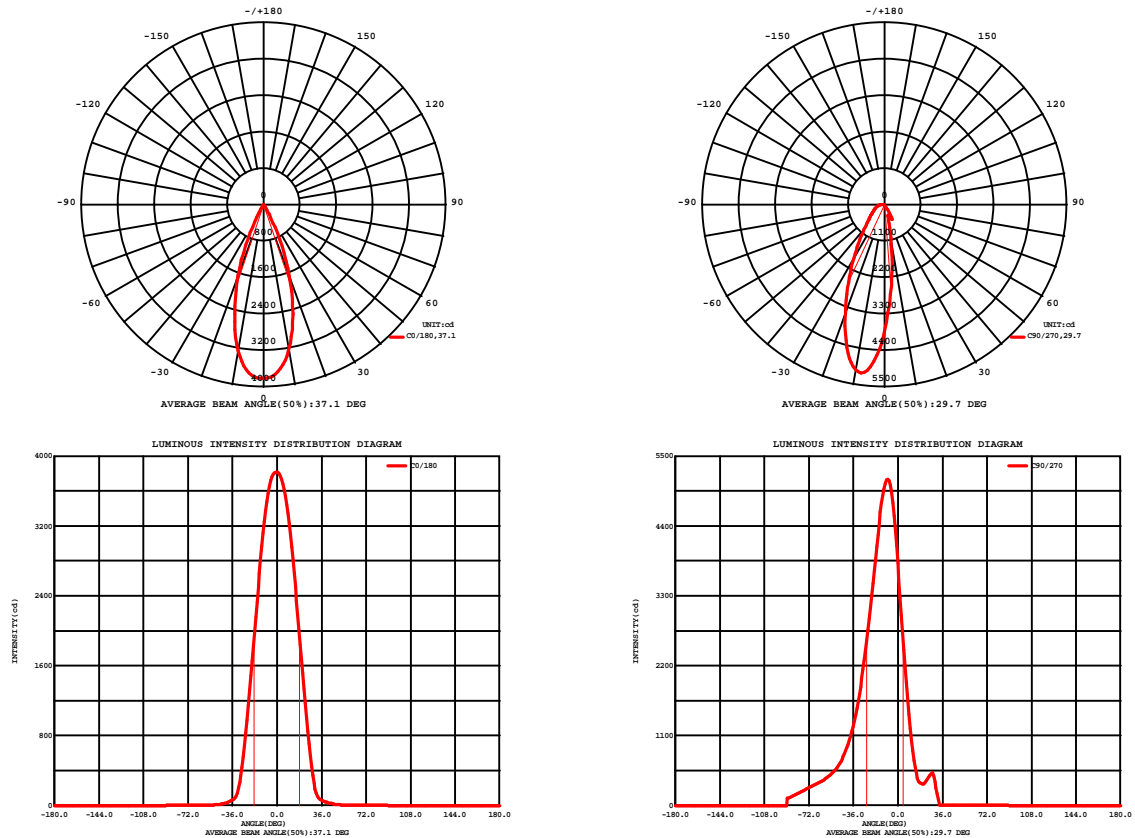


Fig. C0/C180

Fig. C90/C270

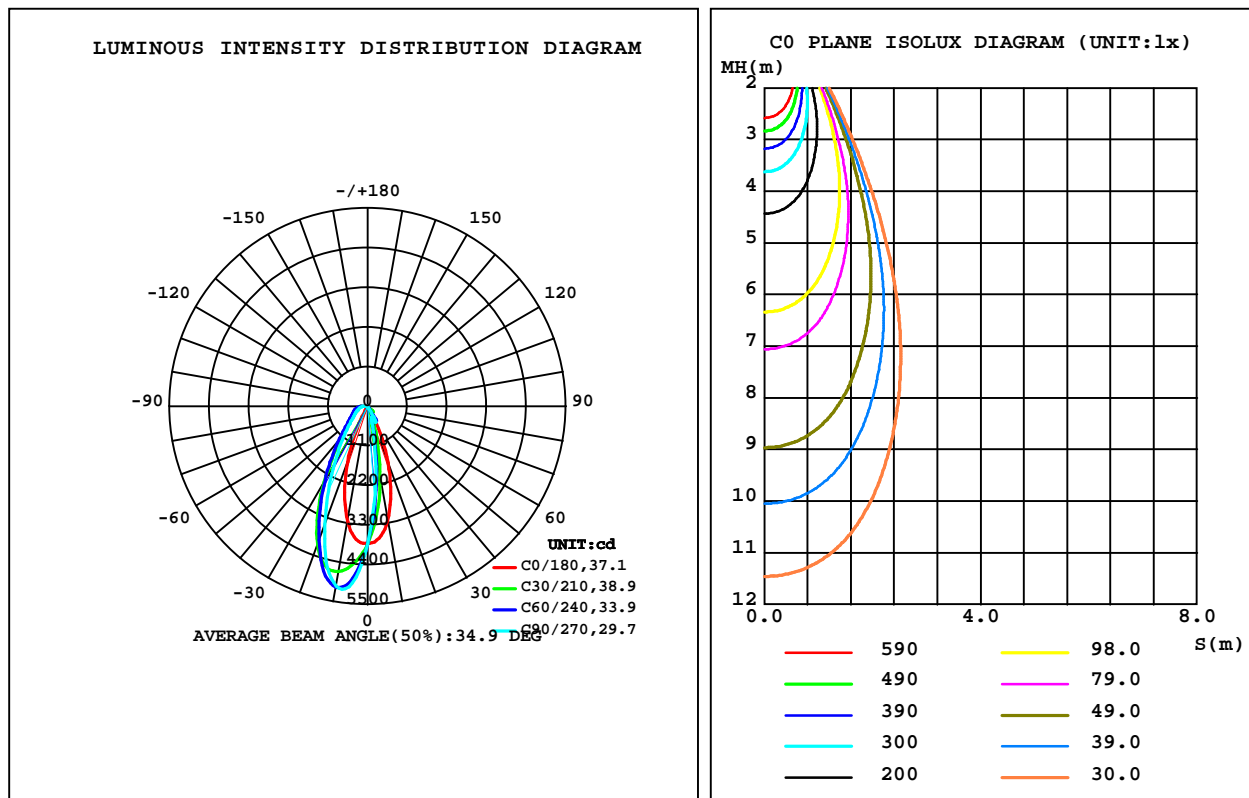
C Range: 0 - 360DEG
C Interval: 30.0DEG
Test Speed: HIGH
Temperature: 25.3DEG
Operators: Zoe
Test Date: 2023-1-11

Range: 0 - 180DEG
Interval: 1.0DEG
Test System: EVERFINE GO-SPEX500_V1 SYSTEM V2.00.416
Humidity: 65.0%
Test Distance: 3.160m [K=1.0000]
Remarks: LAMP: CLU028-1204C4-303H5M3-F1 Ra: 90
REFLECTOR: AP-060C-WW
DRIVER: PRO-UA440 1050mA
30minutes warm-up

LUMINAIRE PHOTOMETRIC TEST REPORT

Test:U:220.25V I:0.1981A P:42.651W PF:0.9751 Freq:49.99Hz Lamp Flux:3632.75x1 lm		
NAME: 2119.204A	TYPE:	WEIGHT:
SPEC.:3000K	DIM.:	SERIAL No.:2301110035
MFR.: RISE	SUR.:0.005904m2	Shielding Angle:

DATA OF LAMP		PHOTOMETRIC DATA Eff: 75.85 lm/W			
MODEL	CITIZEN	I _{max} (cd)	5308	S/MH(C0/180)	0.59
NOMINAL POWER(W)	42	LOR(%)	89.1	S/MH(C90/270)	0.90
RATED VOLTAGE(V)	220	TOTAL FLUX(lm)	3235.2	h UP,DN(C0-180)	0.0,12.4
NOMINAL FLUX(lm)	3632.75	CIE CLASS	DIRECT	h UP,DN(C180-360)	0.0,76.6
LAMPS INSIDE	1	h up(%)	0.0	CIBSE SHR NOM	0.50
TEST VOLTAGE(V)	220	h down(%)	89.1	CIBSE SHR MAX	0.55



C Range: 0 - 360DEG
C Interval: 30.0DEG
Test Speed: HIGH
Temperature:25.3DEG
Operators:Zoe
Test Date:2023-1-11

g Range: 0 - 180DEG
Interval: 1.0DEG
Test System:EVERFINE GO-SPEX500_V1 SYSTEM V2.00.416
Humidity:65.0%
Test Distance:3.160m [K=1.0000]
Remarks: LAMP:CLU028-1204C4-303H5M3-F1 Ra:90
REFLECTOR:AP-060C-WW
DRIVER:PRO-UA440 1050mA
30minutes warm-up

ZONAL FLUX DIAGRAM

ZONAL FLUX DIAGRAM:

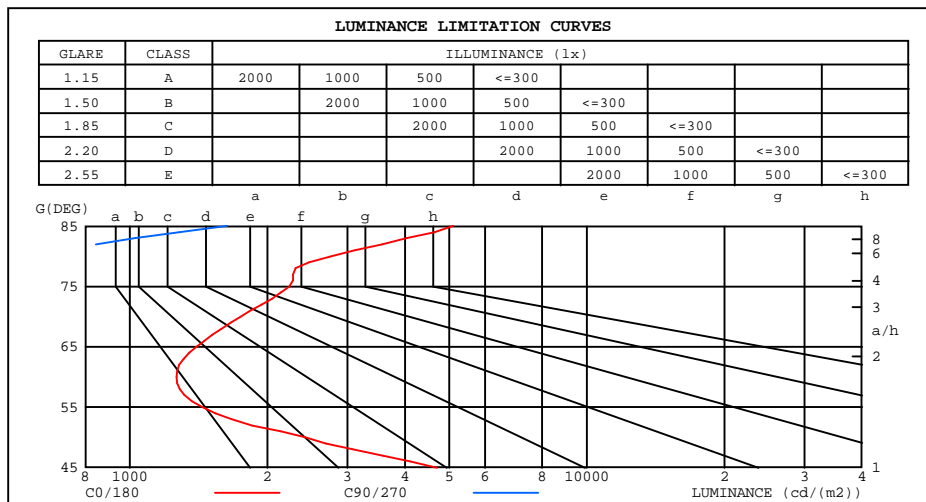
g	C0	C45	C90	C135	C180	C225	C270	C315	g	F zone	F total	%lum,lamp
10	3225	1714	1218	1645	3250	4879	5063	5016	0- 10	339.1	339.1	10.5,9.34
20	1679	444.9	338.6	428.6	1655	4020	3492	4198	10- 20	745.6	1085	33.5,29.9
30	255.3	294.3	365.1	351.6	270.2	2397	1873	2502	20- 30	725.7	1810	56,49.8
40	37.62	107.3	1.400	149.7	33.31	1212	966.5	1276	30- 40	489.3	2300	71.1,63.3
50	8.880	42.61	0.2674	14.07	7.971	679.9	570.3	741.5	40- 50	312.5	2612	80.7,71.9
60	3.623	0.7351	0.1319	0.6590	4.464	460.0	399.6	523.3	50- 60	211.2	2824	87.3,77.7
70	3.419	0.2702	0.2592	0.3417	4.092	354.2	294.5	413.6	60- 70	170.3	2994	92.5,82.4
80	2.730	0.6788	0.5917	0.8220	2.633	270.2	196.6	331.1	70- 80	142.3	3136	96.9,86.3
90	0	0	0	0	0	0	0	0	80- 90	99.04	3235	100,89.1
100	0	0	0	0	0	0	0	0	90-100	0	3235	100,89.1
110	0	0	0	0	0	0	0	0	100-110	0	3235	100,89.1
120	0	0	0	0	0	0	0	0	110-120	0	3235	100,89.1
130	0	0	0	0	0	0	0	0	120-130	0	3235	100,89.1
140	0	0	0	0	0	0	0	0	130-140	0	3235	100,89.1
150	0	0	0	0	0	0	0	0	140-150	0	3235	100,89.1
160	0	0	0	0	0	0	0	0	150-160	0	3235	100,89.1
170	0	0	0	0	0	0	0	0	160-170	0	3235	100,89.1
180	0	0	0	0	0	0	0	0	170-180	0	3235	100,89.1
DEG	LUMINOUS INTENSITY:cd									UNIT:lm		

C Range: 0 - 360DEG
C Interval: 30.0DEG
Test Speed: HIGH
Temperature:25.3DEG
Operators:Zoe
Test Date:2023-1-11

g Range: 0 - 180DEG
Interval: 1.0DEG
Test System:EVERFINE GO-SPEX500_V1 SYSTEM V2.00.416
Humidity:65.0%
Test Distance:3.160m [K=1.0000]
Remarks: LAMP:CLU028-1204C4-303H5M3-F1 Ra:90
REFLECTOR:AP-060C-WW
DRIVER:PRO-UA440 1050mA
30minutes warm-up

LUMINANCE LIMITATION CURVES

Test:U:220.25V I:0.1981A P:42.651W PF:0.9751 Freq:49.99Hz Lamp Flux:3632.75x1 lm		
NAME: 2119.204A	TYPE:	WEIGHT:
SPEC.:3000K	DIM.:	SERIAL No.:2301110035
MFR.: RISE	SUR.:0.005904m2	Shielding Angle:



LUMINANCE cd/(m2)		
G(180)	C0/180	C90/270
85	5107	1632
80	2748	582
75	2235	269
70	1748	130
65	1400	72
60	1267	45
55	1442	36
50	2415	71
45	4712	238

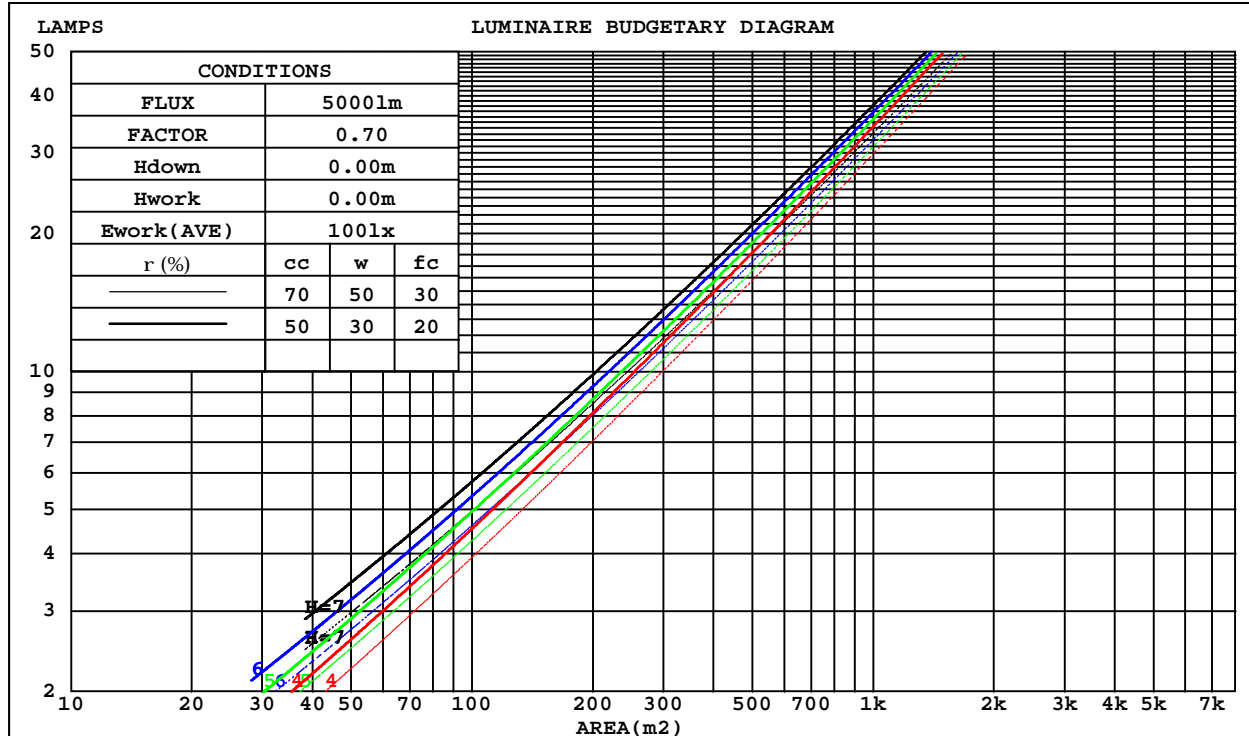
C Range: 0 - 360DEG
C Interval: 30.0DEG
Test Speed: HIGH
Temperature:25.3DEG
Operators:Zoe
Test Date:2023-1-11

G Range: 0 - 180DEG
G Interval: 1.0DEG
Test System:EVERFINE GO-SPEX500_V1 SYSTEM V2.00.416
Humidity:65.0%
Test Distance:3.160m [K=1.0000]
Remarks: LAMP:CLU028-1204C4-303H5M3-F1 Ra:90
REFLECTOR:AP-060C-WW
DRIVER:PRO-UA440 1050mA
30minutes warm-up

CU AND LUMINAIRE BUDGETARY ESTIMATE DIAGRAM

Test:U:220.25V I:0.1981A P:42.651W PF:0.9751 Freq:49.99Hz Lamp Flux:3632.75x1 lm		
NAME: 2119.204A	TYPE:	WEIGHT:
SPEC.:3000K	DIM.:	SERIAL No.:2301110035
MFR.: RISE	SUR.:0.005904m2	Shielding Angle:

rcc	80%			70%			50%			30%			10%			0
rw	50%	30%	10%	50%	30%	10%	50%	30%	10%	50%	30%	10%	50%	30%	10%	0
r fc	20%			20%			20%			20%			20%			0
RCR	RCR:Room Cavity Ratio															



C Range: 0 - 360DEG
C Interval: 30.0DEG
Test Speed: HIGH
Temperature:25.3DEG
Operators:Zoe
Test Date:2023-1-11

g Range: 0 - 180DEG
Interval: 1.0DEG
Test System:EVERFINE GO-SPEX500_V1 SYSTEM V2.00.416
Humidity:65.0%
Test Distance:3.160m [K=1.0000]
Remarks: LAMP:CLU028-1204C4-303H5M3-F1 Ra:90
REFLECTOR:AP-060C-WW
DRIVER:PRO-UA440 1050mA
30minutes warm-up

WEC AND CCEC

Test:U:220.25V I:0.1981A P:42.651W PF:0.9751 Freq:49.99Hz Lamp Flux:3632.75x1 lm		
NAME: 2119.204A	TYPE:	WEIGHT:
SPEC.:3000K	DIM.:	SERIAL No.:2301110035
MFR.: RISE	SUR.:0.005904m2	Shielding Angle:

rcc	80%			70%			50%			30%			10%			0
rw	50%	30%	10%	50%	30%	10%	50%	30%	10%	50%	30%	10%	50%	30%	10%	0
rfc	20%			20%			20%			20%			20%			0
RCR	RCR:Room Cavity Ratio Wall Exitance Coefficients(WEC)															
0.0																
1.0	.229	.130	.041	.223	.127	.040	.211	.121	.039	.201	.116	.037	.191	.111	.036	
2.0	.207	.113	.035	.201	.111	.034	.191	.106	.033	.182	.102	.032	.174	.098	.031	
3.0	.189	.101	.030	.185	.099	.030	.176	.095	.029	.168	.092	.028	.161	.089	.028	
4.0	.174	.091	.027	.170	.089	.026	.163	.086	.026	.156	.084	.025	.150	.081	.025	
5.0	.162	.082	.024	.158	.081	.024	.152	.079	.023	.146	.077	.023	.140	.075	.022	
6.0	.151	.076	.022	.148	.075	.022	.142	.073	.021	.137	.071	.021	.132	.069	.021	
7.0	.142	.070	.020	.139	.069	.020	.134	.068	.019	.129	.066	.019	.125	.065	.019	
8.0	.133	.065	.018	.131	.065	.018	.126	.063	.018	.122	.062	.018	.118	.061	.018	
9.0	.126	.061	.017	.124	.060	.017	.120	.059	.017	.116	.058	.017	.112	.057	.016	
10.0	.119	.057	.016	.118	.057	.016	.114	.056	.016	.110	.055	.016	.107	.054	.015	

rcc	80%			70%			50%			30%			10%			0
rw	50%	30%	10%	50%	30%	10%	50%	30%	10%	50%	30%	10%	50%	30%	10%	0
rfc	20%			20%			20%			20%			20%			0
RCR	RCR:Room Cavity Ratio						Ceiling Cavity Exitance Coefficients(CCEC)									
0.0	.170	.170	.170	.145	.145	.145	.099	.099	.099	.057	.057	.057	.018	.018	.018	
1.0	.157	.139	.123	.135	.120	.106	.092	.082	.073	.053	.048	.043	.017	.015	.014	
2.0	.146	.118	.094	.125	.101	.081	.086	.070	.057	.050	.041	.033	.016	.013	.011	
3.0	.137	.101	.073	.117	.088	.064	.080	.061	.045	.046	.036	.026	.015	.012	.009	
4.0	.128	.089	.059	.110	.077	.051	.076	.054	.036	.044	.031	.021	.014	.010	.007	
5.0	.120	.079	.048	.103	.068	.042	.071	.048	.030	.041	.028	.018	.013	.009	.006	
6.0	.113	.071	.040	.097	.061	.035	.067	.043	.025	.039	.025	.015	.013	.008	.005	
7.0	.107	.064	.034	.092	.056	.030	.064	.039	.021	.037	.023	.013	.012	.008	.004	
8.0	.102	.059	.030	.088	.051	.026	.061	.036	.018	.035	.021	.011	.011	.007	.004	
9.0	.097	.054	.026	.083	.047	.023	.058	.033	.016	.034	.020	.010	.011	.006	.003	
10.0	.092	.050	.023	.079	.044	.020	.055	.031	.014	.032	.018	.008	.010	.006	.003	

C Range: 0 - 360DEG
C Interval: 30.0DEG
Test Speed: HIGH
Temperature:25.3DEG
Operators:Zoe
Test Date:2023-1-11

g Range: 0 - 180DEG
Interval: 1.0DEG
Test System:EVERFINE GO-SPEX500_V1 SYSTEM V2.00.416
Humidity:65.0%
Test Distance:3.160m [K=1.0000]
Remarks: LAMP:CLU028-1204C4-303H5M3-F1 Ra:90
REFLECTOR:AP-060C-WW
DRIVER:PRO-UA440 1050mA
30minutes warm-up

UGR(Unified Glare Rating) Table

Test:U:220.25V I:0.1981A P:42.651W PF:0.9751 Freq:49.99Hz Lamp Flux:3632.75x1 lm										
NAME: 2119.204A					TYPE:			WEIGHT:		
SPEC.:3000K					DIM.:			SERIAL No.:2301110035		
MFR.: RISE					SUR.:0.005904m2			Shielding Angle:		
ceiling/cavity	0.7	0.7	0.5	0.5	0.3	0.7	0.7	0.5	0.5	0.3
walls	0.5	0.3	0.5	0.3	0.3	0.5	0.3	0.5	0.3	0.3
working plane	0.2	0.2	0.2	0.2	0.2	0.2	0.2	0.2	0.2	0.2
Room dimensions	Viewed crosswise					Viewed endwise				
x = 2H y = 2H	13.1	14.2	13.3	14.4	14.6	10.1	11.3	10.3	11.5	11.6
3H	12.9	14.0	13.2	14.2	14.4	9.9	11.0	10.2	11.2	11.4
4H	12.8	13.9	13.1	14.1	14.3	9.8	10.8	10.1	11.1	11.3
6H	12.8	13.8	13.1	14.0	14.3	9.7	10.7	10.0	10.9	11.2
8H	12.8	13.7	13.1	14.0	14.3	9.7	10.6	10.0	10.9	11.2
12H	12.8	13.7	13.1	14.0	14.3	9.6	10.6	10.0	10.8	11.1
4H 2H	12.8	13.8	13.1	14.0	14.3	9.8	10.8	10.1	11.1	11.3
3H	12.6	13.5	12.9	13.8	14.1	9.6	10.5	9.9	10.8	11.1
4H	12.5	13.4	12.9	13.7	14.0	9.5	10.3	9.9	10.7	11.0
6H	12.5	13.2	12.9	13.6	13.9	9.4	10.2	9.8	10.5	10.9
8H	12.5	13.2	12.9	13.6	13.9	9.4	10.1	9.8	10.4	10.8
12H	12.6	13.3	13.0	13.6	14.0	9.4	10.0	9.8	10.4	10.8
8H 4H	12.4	13.1	12.8	13.4	13.8	9.4	10.1	9.8	10.4	10.8
6H	12.3	12.9	12.8	13.3	13.8	9.3	9.9	9.7	10.3	10.7
8H	12.4	12.9	12.8	13.3	13.8	9.3	9.8	9.7	10.2	10.7
12H	12.5	13.0	13.0	13.4	13.9	9.3	9.8	9.8	10.2	10.7
12H 4H	12.3	13.0	12.7	13.4	13.8	9.3	10.0	9.7	10.3	10.7
6H	12.3	12.8	12.8	13.2	13.7	9.2	9.8	9.7	10.2	10.6
8H	12.3	12.8	12.8	13.2	13.7	9.2	9.7	9.7	10.1	10.6
Variations with the observer position at spacings:										
S = 1.0H	+ 5.4 / - 9.7					+ 3.8 / - 9.0				
1.5H	+ 3.9 / -11.7					+ 8.8 / - 9.3				
2.0H	+ 7.1 / - 9.4					+ 4.8 / - 1.2				

CIE Pub.117, 3633 lm Total Lamp Luminous Flux Corrected ($8\log(F/F_0) = 4.5$)
Area: 0.005904 m2

C Range: 0 - 360DEG
C Interval: 30.0DEG
Test Speed: HIGH
Temperature:25.3DEG
Operators:Zoe
Test Date:2023-1-11

g Range: 0 - 180DEG
g Interval: 1.0DEG
Test System:EVERFINE GO-SPEX500_V1 SYSTEM V2.00.416
Humidity:65.0%
Test Distance:3.160m [K=1.0000]
Remarks: LAMP:CLU028-1204C4-303H5M3-F1 Ra:90
REFLECTOR:AP-060C-WW
DRIVER:PRO-UA440 1050mA
30minutes warm-up

UTILIZATION FACTORS TABLE

Test:U:220.25V I:0.1981A P:42.651W PF:0.9751 Freq:49.99Hz Lamp Flux:3632.75x1 lm		
NAME: 2119.204A	TYPE:	WEIGHT:
SPEC.:3000K	DIM.:	SERIAL No.:2301110035
MFR.: RISE	SUR.:0.005904m2	Shielding Angle:

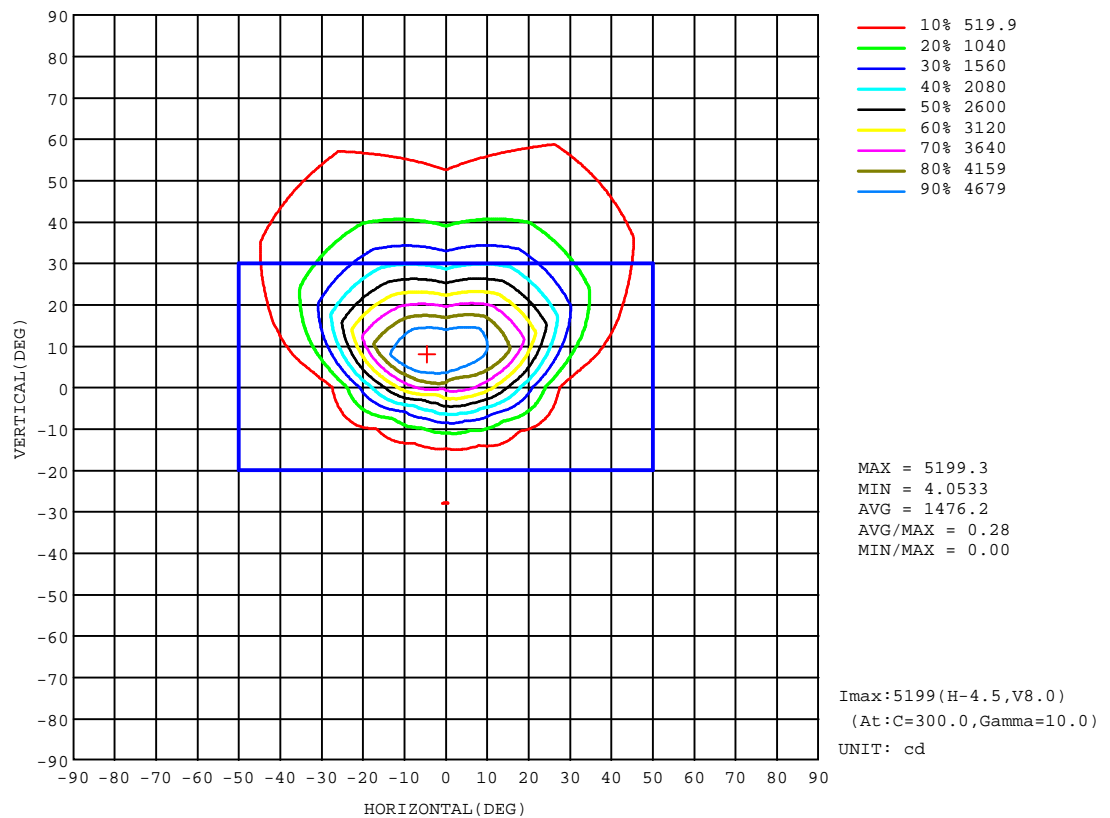
REFLECTANCE										
Ceiling	0.8	0.8	0.8	0.7	0.7	0.7	0.5	0.5	0.5	0
Walls	0.7	0.5	0.3	0.7	0.5	0.3	0.7	0.5	0.3	0
Working plane	0.2	0.2	0.2	0.2	0.2	0.2	0.2	0.2	0.2	0
ROOM INDEX	UTILIZATION FACTORS(PERCENT) $k(RI) \times RCR = 5$									
k = 0.60	66	58	53	65	58	53	64	58	53	49
0.80	73	66	61	73	65	61	71	65	60	56
1.00	79	71	66	78	71	66	76	71	66	61
1.25	83	76	72	82	76	71	80	75	70	65
1.50	86	80	75	85	79	75	83	78	74	69
2.00	90	85	80	89	84	80	86	82	78	72
2.50	93	87	83	91	86	82	88	84	81	74
3.00	95	90	86	93	89	85	90	86	83	77
4.00	97	93	90	95	92	89	92	89	87	79
5.00	99	96	93	97	94	91	93	91	89	81
ROOM INDEX	UF(total)									Direct
According to DIN EN 13032-2 2004			Suspended					SHRNOM = 1.25		

C Range: 0 - 360DEG
C Interval: 30.0DEG
Test Speed: HIGH
Temperature:25.3DEG
Operators:Zoe
Test Date:2023-1-11

g Range: 0 - 180DEG
g Interval: 1.0DEG
Test System:EVERFINE GO-SPEX500_V1 SYSTEM V2.00.416
Humidity:65.0%
Test Distance:3.160m [K=1.0000]
Remarks: LAMP:CLU028-1204C4-303H5M3-F1 Ra:90
REFLECTOR:AP-060C-WW
DRIVER:PRO-UA440 1050mA
30minutes warm-up

ISOCANDELA DIAGRAM

Test:U:220.25V I:0.1981A P:42.651W PF:0.9751 Freq:49.99Hz Lamp Flux:3632.75x1 lm		
NAME: 2119.204A	TYPE:	WEIGHT:
SPEC.:3000K	DIM.:	SERIAL No.:2301110035
MFR.: RISE	SUR.:0.005904m2	Shielding Angle:

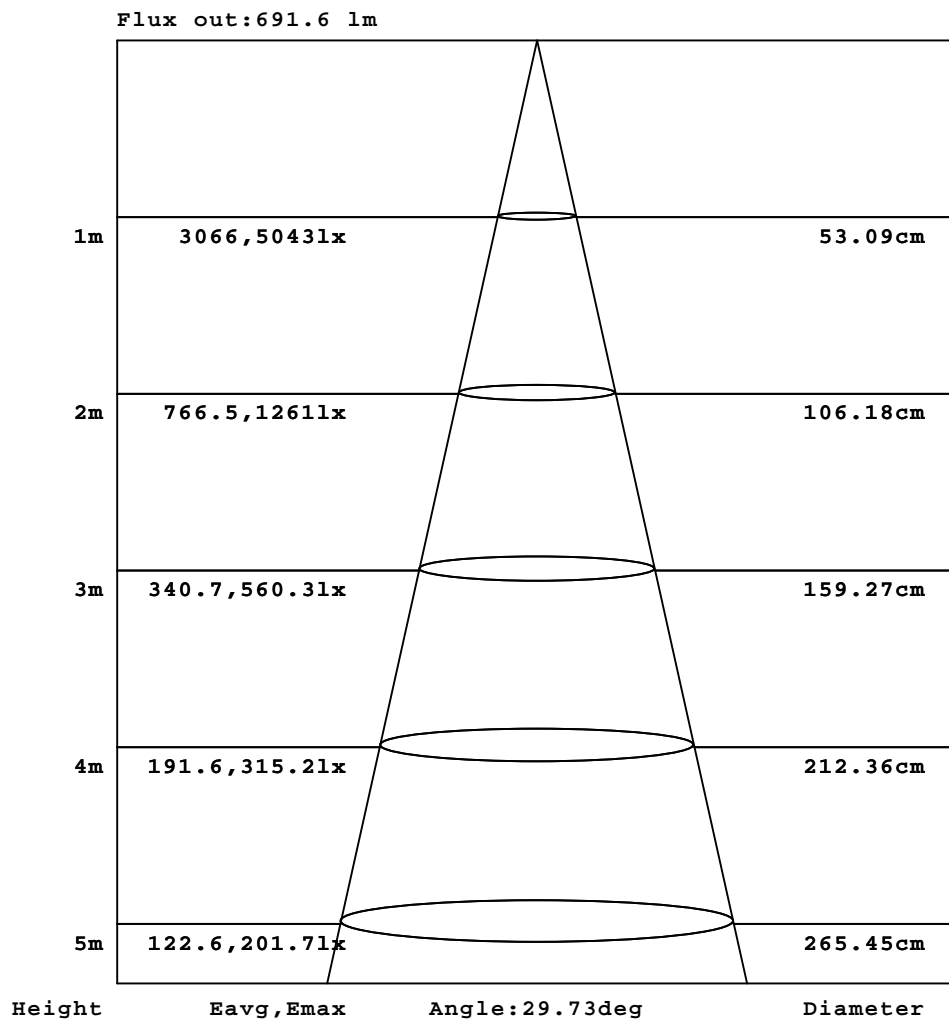


C Range: 0 - 360DEG
C Interval: 30.0DEG
Test Speed: HIGH
Temperature:25.3DEG
Operators:Zoe
Test Date:2023-1-11

Range: 0 - 180DEG
Interval: 1.0DEG
Test System:EVERFINE GO-SPEX500_V1 SYSTEM V2.00.416
Humidity:65.0%
Test Distance:3.160m [K=1.0000]
Remarks: LAMP:CLU028-1204C4-303H5M3-F1 Ra:90
REFLECTOR:AP-060C-WW
DRIVER:PRO-UA440 1050mA
30minutes warm-up

AAI Figure

Test:U:220.25V I:0.1981A P:42.651W PF:0.9751 Freq:49.99Hz Lamp Flux:3632.75x1 lm		
NAME: 2119.204A	TYPE:	WEIGHT:
SPEC.:3000K	DIM.:	SERIAL No.:2301110035
MFR.: RISE	SUR.:0.005904m2	Shielding Angle:



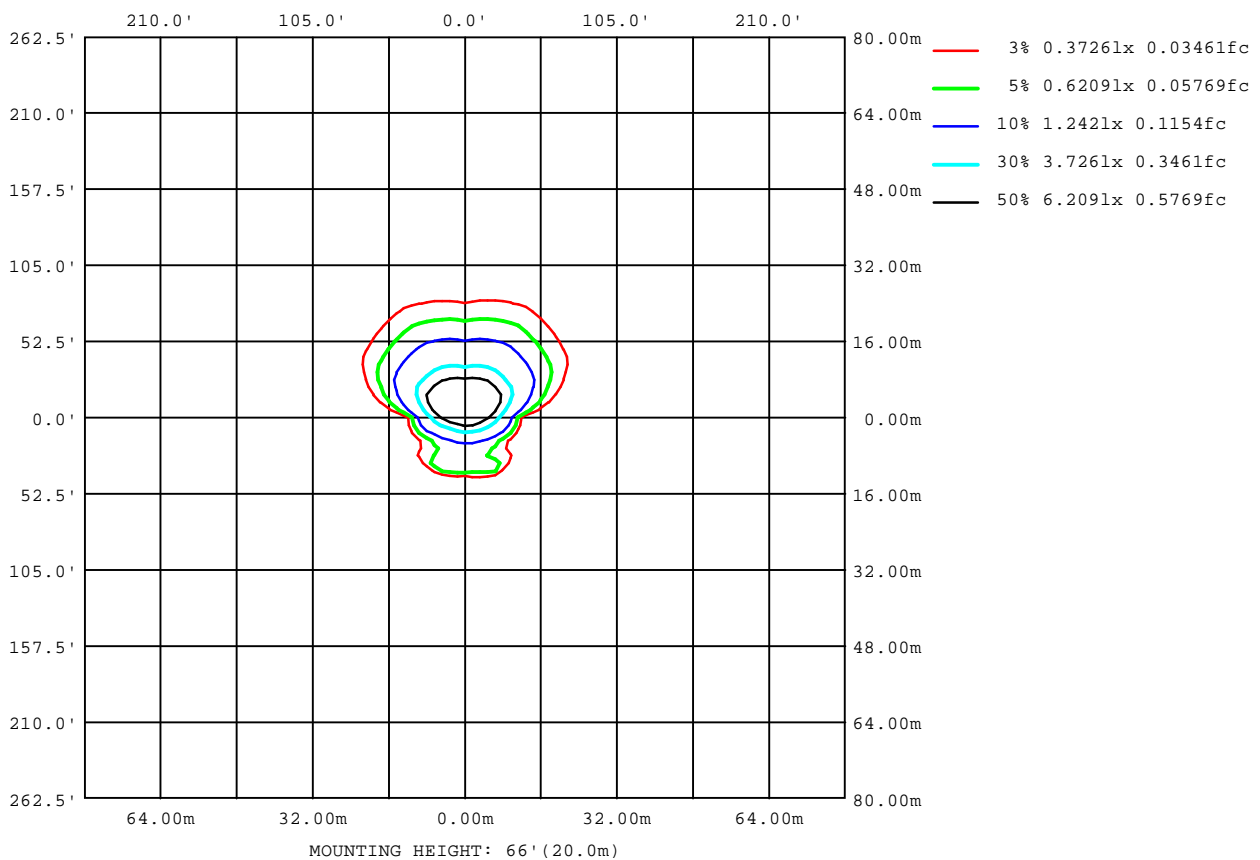
Note:The Curves indicate the illuminated area and the average illumination when the luminaire is at different distance.

C Range: 0 - 360DEG
C Interval: 30.0DEG
Test Speed: HIGH
Temperature:25.3DEG
Operators:Zoe
Test Date:2023-1-11

g Range: 0 - 180DEG
Interval: 1.0DEG
Test System:EVERFINE GO-SPEX500_V1 SYSTEM V2.00.416
Humidity:65.0%
Test Distance:3.160m [K=1.0000]
Remarks: LAMP:CLU028-1204C4-303H5M3-F1 Ra:90
REFLECTOR:AP-060C-WW
DRIVER:PRO-UA440 1050mA
30minutes warm-up

ISOLUX DIAGRAM

Test:U:220.25V I:0.1981A P:42.651W PF:0.9751 Freq:49.99Hz Lamp Flux:3632.75x1 lm		
NAME: 2119.204A	TYPE:	WEIGHT:
SPEC.:3000K	DIM.:	SERIAL No.:2301110035
MFR.: RISE	SUR.:0.005904m2	Shielding Angle:



C Range: 0 - 360DEG
C Interval: 30.0DEG
Test Speed: HIGH
Temperature:25.3DEG
Operators:Zoe
Test Date:2023-1-11

g Range: 0 - 180DEG
g Interval: 1.0DEG
Test System:EVERFINE GO-SPEX500_V1 SYSTEM V2.00.416
Humidity:65.0%
Test Distance:3.160m [K=1.0000]
Remarks: LAMP:CLU028-1204C4-303H5M3-F1 Ra:90
REFLECTOR:AP-060C-WW
DRIVER:PRO-UA440 1050mA
30minutes warm-up

LED Avg.L Report

Test:U:220.25V I:0.1981A P:42.651W PF:0.9751 Freq:49.99Hz Lamp Flux:3632.75x1 lm		
NAME: 2119.204A	TYPE:	WEIGHT:
SPEC.:3000K	DIM.:	SERIAL No.:2301110035
MFR.: RISE	SUR.:0.005904m2	Shielding Angle:

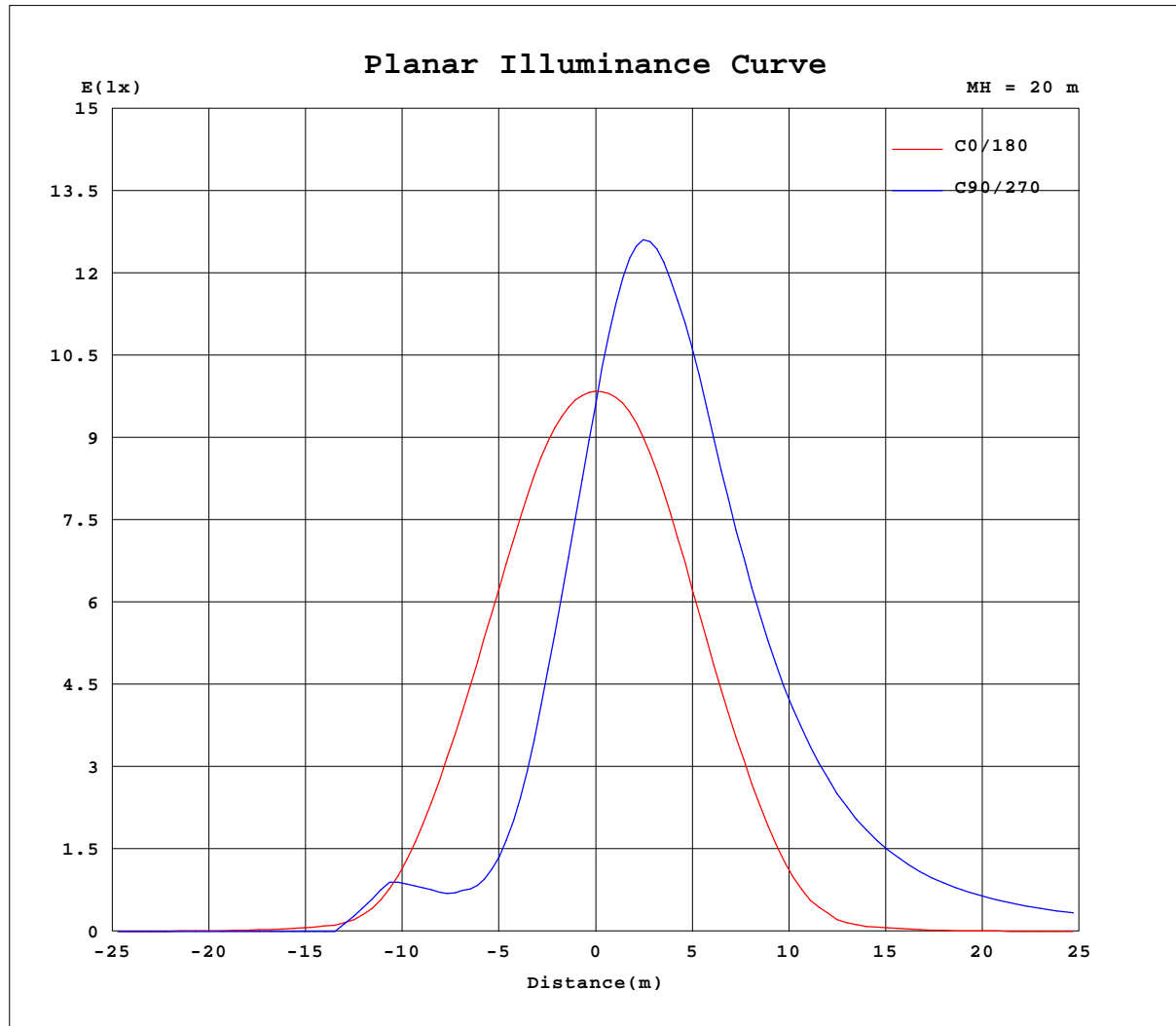
AvgL	cd/m2
L_0~180(65)av	1523
L_0~180(75)av	2141
L_0~180(85)av	3851
L_90~270(65)av	68785
L_90~270(75)av	81723
L_90~270(85)av	141479
L_45(65)av	92642
L_45(75)av	122184
L_45(85)av	265945

Standard: GB/T 29293-2012

C Range: 0 - 360DEG
C Interval: 30.0DEG
Test Speed: HIGH
Temperature:25.3DEG
Operators:Zoe
Test Date:2023-1-11

g Range: 0 - 180DEG
Interval: 1.0DEG
Test System:EVERFINE GO-SPEX500_V1 SYSTEM V2.00.416
Humidity:65.0%
Test Distance:3.160m [K=1.0000]
Remarks: LAMP:CLU028-1204C4-303H5M3-F1 Ra:90
REFLECTOR:AP-060C-WW
DRIVER:PRO-UA440 1050mA
30minutes warm-up

Planar Illuminance Curve



C Range: 0 - 360DEG
 C Interval: 30.0DEG
 Test Speed: HIGH
 Temperature: 25.3DEG
 Operators: Zoe
 Test Date: 2023-1-11

g Range: 0 - 180DEG
 g Interval: 1.0DEG
 Test System: EVERFINE GO-SPEX500_V1 SYSTEM V2.00.416
 Humidity: 65.0%
 Test Distance: 3.160m [K=1.0000]
 Remarks: LAMP: CLU028-1204C4-303H5M3-F1 Ra:90
 REFLECTOR: AP-060C-WW
 DRIVER: PRO-UA440 1050mA
 30minutes warm-up

LUMINOUS DISTRIBUTION INTENSITY DATA

Test:U:220.25V I:0.1981A P:42.651W PF:0.9751 Freq:49.99Hz Lamp Flux:3632.75x1 lm		
NAME: 2119.204A	TYPE:	WEIGHT:
SPEC.:3000K	DIM.:	SERIAL No.:2301110035
MFR.: RISE	SUR.:0.005904m2	Shielding Angle:

Table--1

UNIT: cd

C(°) g (°)	0	30	60	90	120	150	180	210	240	270	300	330						
0	3816	3816	3816	3816	3816	3816	3816	3816	3816	3816	3816	3816						
5	3680	3028	2595	2452	2553	2987	3715	4377	4791	4918	4871	4403						
10	3225	2034	1392	1218	1333	1964	3250	4659	5102	5063	5308	4718						
15	2499	1159	607	500	576	1072	2493	4583	4737	4458	5024	4666						
20	1679	554	334	339	354	505	1655	4084	3955	3492	4229	4167						
25	850	240	328	447	382	249	829	3287	3135	2595	3343	3359						
30	255	142	448	365	512	188	270	2418	2376	1873	2528	2476						
35	73.1	160	177	3.33	76.1	234	70.6	1673	1760	1335	1871	1717						
40	37.6	211	2.68	1.40	2.24	301	33.3	1149	1276	967	1356	1194						
45	19.1	225	1.49	0.99	1.46	238	15.2	830	945	728	1010	876						
50	8.88	84.0	0.86	0.27	0.70	27.7	7.97	621	740	570	802	679						
55	4.73	1.92	0.22	0.12	0.16	1.86	5.46	494	609	471	670	558						
60	3.62	1.32	0.14	0.13	0.16	1.17	4.46	401	519	400	573	473						
65	3.38	0.69	0.19	0.18	0.20	0.53	4.22	339	459	343	502	415						
70	3.42	0.24	0.30	0.26	0.32	0.37	4.09	295	414	295	448	379						
75	3.31	0.37	0.50	0.41	0.52	0.54	3.23	264	366	249	394	353						
80	2.73	0.57	0.78	0.59	0.82	0.82	2.63	244	296	197	320	343						
85	2.55	0.81	1.15	0.83	1.22	1.15	1.42	221	223	145	234	322						
90	0.00	0.00	0.00	0.00	0.00	0.00	0.00	0.00	0.00	0.00	0.00	0.00						
95	0.00	0.00	0.00	0.00	0.00	0.00	0.00	0.00	0.00	0.00	0.00	0.00						
100	0.00	0.00	0.00	0.00	0.00	0.00	0.00	0.00	0.00	0.00	0.00	0.00						
105	0.00	0.00	0.00	0.00	0.00	0.00	0.00	0.00	0.00	0.00	0.00	0.00						
110	0.00	0.00	0.00	0.00	0.00	0.00	0.00	0.00	0.00	0.00	0.00	0.00						
115	0.00	0.00	0.00	0.00	0.00	0.00	0.00	0.00	0.00	0.00	0.00	0.00						
120	0.00	0.00	0.00	0.00	0.00	0.00	0.00	0.00	0.00	0.00	0.00	0.00						
125	0.00	0.00	0.00	0.00	0.00	0.00	0.00	0.00	0.00	0.00	0.00	0.00						
130	0.00	0.00	0.00	0.00	0.00	0.00	0.00	0.00	0.00	0.00	0.00	0.00						
135	0.00	0.00	0.00	0.00	0.00	0.00	0.00	0.00	0.00	0.00	0.00	0.00						
140	0.00	0.00	0.00	0.00	0.00	0.00	0.00	0.00	0.00	0.00	0.00	0.00						
145	0.00	0.00	0.00	0.00	0.00	0.00	0.00	0.00	0.00	0.00	0.00	0.00						
150	0.00	0.00	0.00	0.00	0.00	0.00	0.00	0.00	0.00	0.00	0.00	0.00						
155	0.00	0.00	0.00	0.00	0.00	0.00	0.00	0.00	0.00	0.00	0.00	0.00						
160	0.00	0.00	0.00	0.00	0.00	0.00	0.00	0.00	0.00	0.00	0.00	0.00						
165	0.00	0.00	0.00	0.00	0.00	0.00	0.00	0.00	0.00	0.00	0.00	0.00						
170	0.00	0.00	0.00	0.00	0.00	0.00	0.00	0.00	0.00	0.00	0.00	0.00						
175	0.00	0.00	0.00	0.00	0.00	0.00	0.00	0.00	0.00	0.00	0.00	0.00						
180	0.00	0.00	0.00	0.00	0.00	0.00	0.00	0.00	0.00	0.00	0.00	0.00						

C Range: 0 - 360DEG
C Interval: 30.0DEG
Test Speed: HIGH
Temperature:25.3DEG
Operators:Zoe
Test Date:2023-1-11

g Range: 0 - 180DEG
g Interval: 1.0DEG
Test System:EVERFINE GO-SPEX500_V1 SYSTEM V2.00.416
Humidity:65.0%
Test Distance:3.160m [K=1.0000]
Remarks: LAMP:CLU028-1204C4-303H5M3-F1 Ra:90
REFLECTOR:AP-060C-WW
DRIVER:PRO-UA440 1050mA
30minutes warm-up